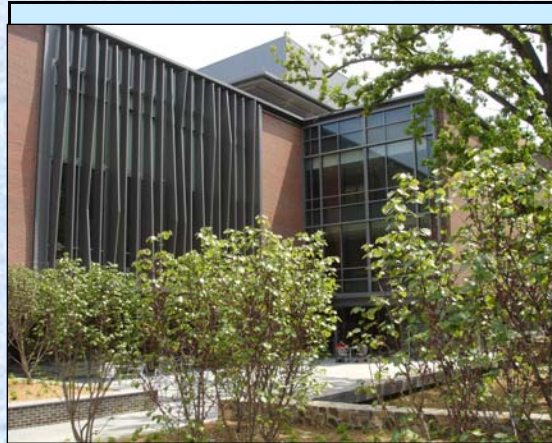


◆ The fourth floor roof contains two drought-tolerant sedum gardens that minimize stormwater runoff and reduce the urban heat island effect. Any excess rainwater is sent to the underground cistern for further use.



◆ The patio provides an outdoor gathering space, where people can dine, talk, and enjoy the view.

◆ Water efficient plumbing includes water-free urinals and hands-free, infrared faucets.



“Ultimately what we want is for Carolina to be a world center of knowledge, where great students and scholars come and where great research and scholarship emanates and affects the world.”

— Chancellor James Moeser

The design of the FedEx Global Education Center fosters a more aware and responsible global community.

FedEx Global Education Center
301 Pittsboro Street, CB 3268
Reception Desk: (919) 962-2435
Email: global@unc.edu
Web Site: global.unc.edu

The Sustainability Office
103 Airport Drive, CB 1800
Phone: (919) 843-7284
Email: sustainability@unc.edu
Web Site: sustainability.unc.edu

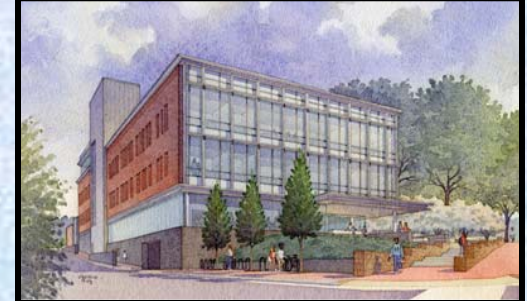
The University of North Carolina at Chapel Hill
Chapel Hill, NC 27599



UNC
GLOBAL



FedEx Global Education Center



The FedEx Global Education Center is home to multiple departments that uniquely integrate student and faculty services with academic instruction and research under one roof. Above the roof are two drought-resistant gardens that capture rainwater. These green roofs, along with abundant daylight, underground parking, and toilets flushed with rainwater, are among the many sustainable elements incorporated in the building design.



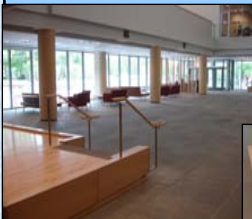
◆ Previously a surface parking lot, the building site for the FedEx Global Education Center was designed around a grove of oak trees that remains part of the property.



◆ Next to this grove is a multi-purpose green area designed to store rainwater in an underground cistern. The stored water is used for on-site irrigation and toilet flushing.

◆ Expanded greenspace and underground parking resulted in a 7% decrease in impervious surface.

◆ Local construction materials, such as slate, maple and cherry wood, were obtained within 500 miles of the building site.



◆ 68% of construction and demolition debris was recycled. Custom-built maple recycling bins are located in high-traffic areas for easy recycling.

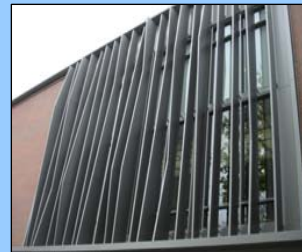


◆ A three-story day-lit atrium is surrounded by offices, classrooms and community spaces, such as the Global Cup Café, that benefit from the

abundance of natural light.



◆ Translucent walls along corridors bring light inward.



◆ Vertical fins on the western façade keep out unwanted glare and heat gain.



◆ Compact fluorescent lights with photosensors dim according to the supply of available sunlight.

◆ Occupancy sensors ensure lights are used only when necessary.

◆ A permanent temperature, humidity and CO₂ monitoring system operates year-round to ensure occupant comfort.



◆ 15 Bus lines and several bike racks are found within close proximity.



◆ To encourage and accommodate pedestrian and bike transportation, a shower is available in the building.



◆ An underground parking deck, comprised of 134 spaces on 2 levels, reduces impervious surface area. The slope of the land helps to conceal the parking garage.



◆ The systems furniture provides flexibility by adapting to different uses over time.

